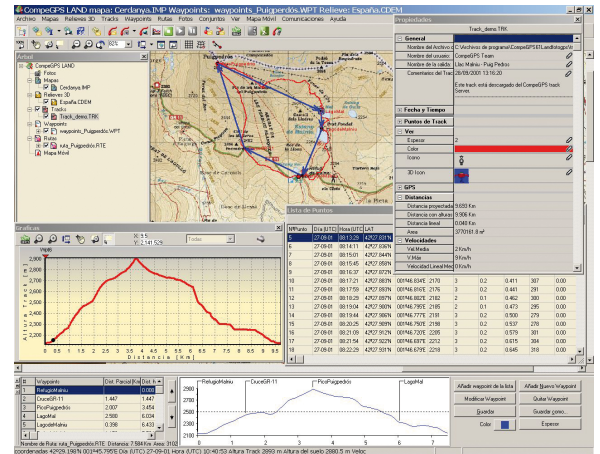


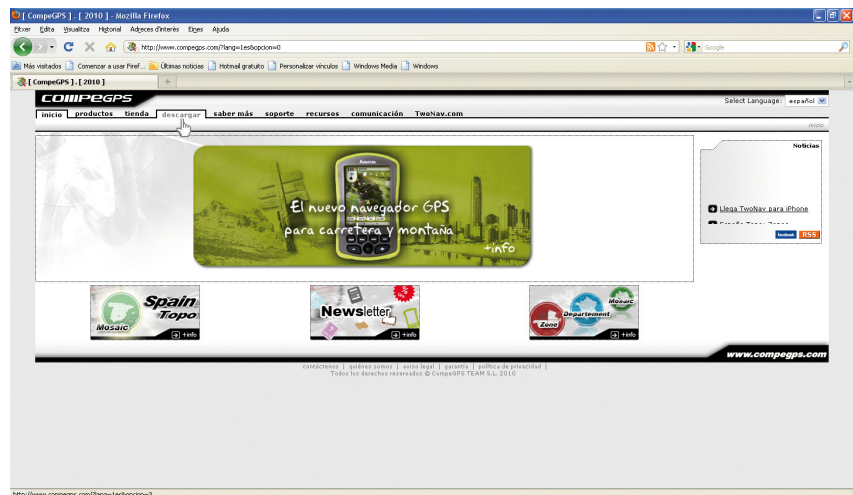
Second chapter: Installation

The first thing you need to do is to get and install the software CompeGPS Land on your computer. This chapter explains, in a detailed and concise way, how to download the application from our Website and every further needed steps for a proper installation on your PC. We recommend that you navigate for a while in the Web, to discover all the products that CompeGPS provides you on the different platforms.



How to get CompeGPS Land?

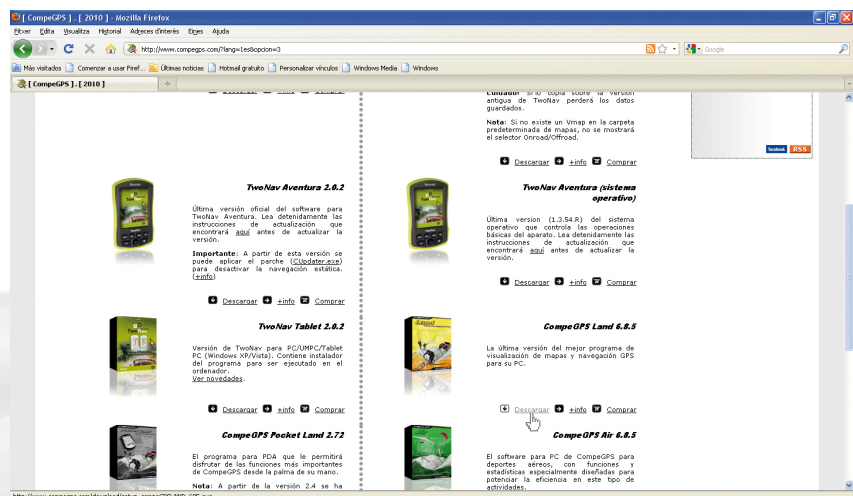
The easiest way to access the program is to download it from the 'Download' section of CompeGPS Website (www.compegps.com) (Figure 1). If you wish, you can choose the language to the top right of the page. From here you can freely download any of the programs in its latest version. To access all program functions indefinitely, you will need to have a corresponding license fee. CompeGPS works with a modular licensing system to meet the specific needs of each user. This system consists of dividing the program into several modules (groups of functions), which can be purchased separately.



Picture 1

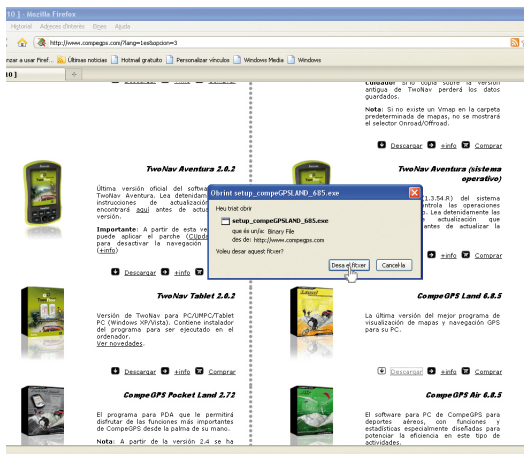
If you take a look at the site you will find the different programs, in their latest version. For example, CompeGPS Land and TwoNav software are available on almost any platform.

In any section you can choose between 3 options: 'download' (allows you to get the basic version of the program), 'more information' (for know more about the characteristics and capabilities of these applications) or 'buy' (in different modalities). Let choose 'download the program' (figure 2). Then a window will appears asking where to save the file. Click "OK" to save it (Figure 3).



Picture 2

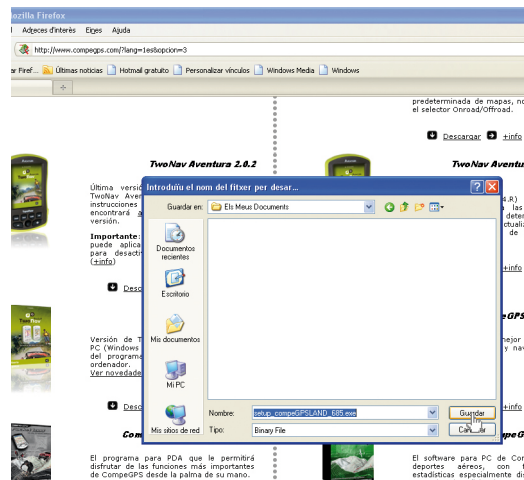
If your browser does not have assigned a default folder where to



Picture 3

store downloads, a new window will ask you where you prefer to save the file. you are free to choose the place you want, for example, My Documents folder (Figure 4).

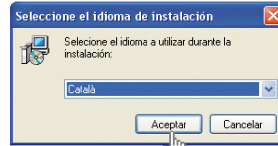
INSTALLING THE PROGRAM:



Picture 4

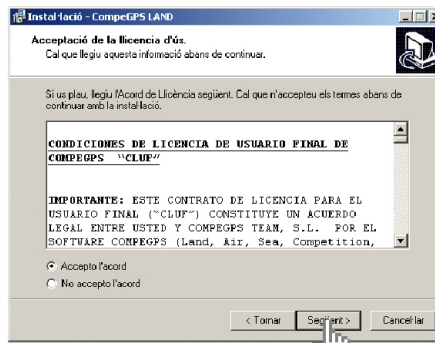
Once the download is completed, open the folder where you saved the file and execute it (double click). Depending on how you have configured the security policies of our system you will get a window with a warning about the manufacturer of the program is unknown and will ask you to confirm if you really want to run it.

Confirm and begin the installation, but first you may choose the language (Figure 5).



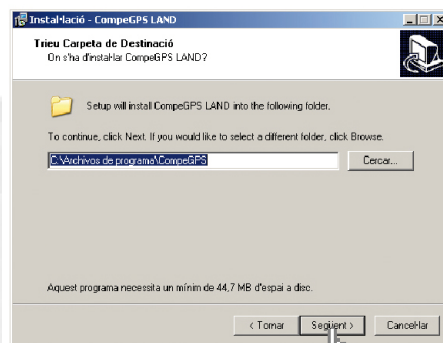
Picture 5

After selecting the language, a welcome window will appear in the installation wizard that will guide and help you through the installation. Click on 'Next'. A window will open (Figure 6) which prevents you from continuing the installation, except that you read and accept the rules of use. Once read and agreed, continue with the installation.



Picture 6

A new window will warn you that if you update an earlier version of CompeGPS Land, you can install the program in the same folder in which the old version is. In this way, if you already have a license, the new version will also be automatically activated. Click on 'Next' to display the window that invites you to choose the folder where to install CompeGPS Land (Fig. 7). If you have no preference, it will create a folder named CompeGPS within Program

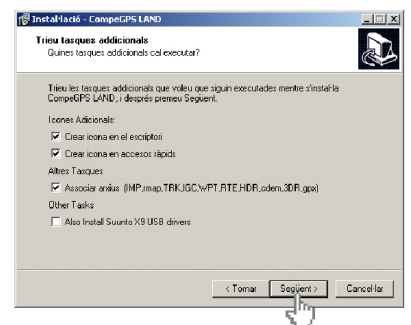


Picture 7

Files, to install the application. You can also let that, in the next window, the installer copy the link to the folder created by default. Click 'Next' to continue.

Figure 8 shows the options that appear in the last window. It allows you to choose whether or not to create a shortcut icon on the desktop or if you wish to create another in the shortcuts bar. It also offers you the possibility to associate a set of file extensions that will allow you to link these types of files with the program, so that double-clicking any file with one of these extensions, the program will open directly CompeGPS Land. It's a recommended option. The last option ask you if you would like install the drivers of Suunto X9 receiver. Just check this option in the case you are using this model. Click 'Next', verify in the new window that the options mentioned are the ones you have chosen and click again on 'Next' button.

You'll have to wait a few seconds to install the program. Once completed, a window (Figure 9) will allow you, if you wish, to run the program for



Picture 8

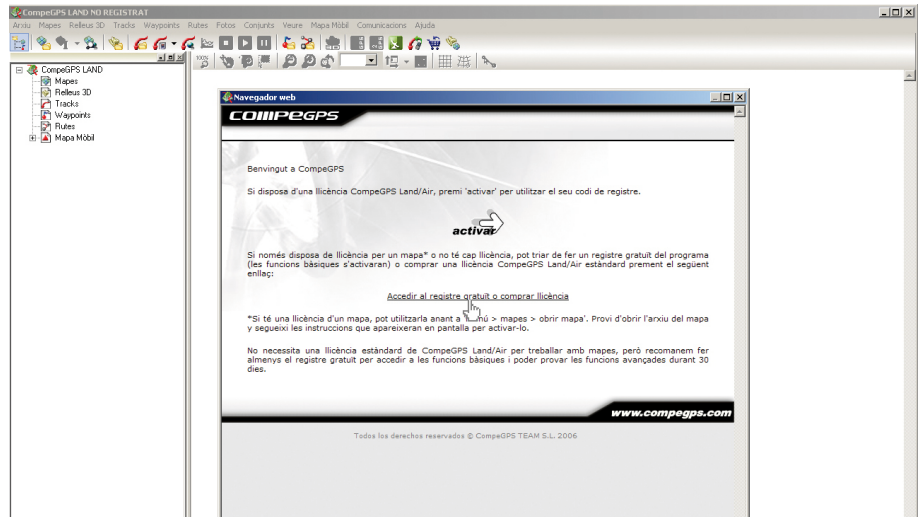


Picture 9

first time. Accept and click 'Finish'.

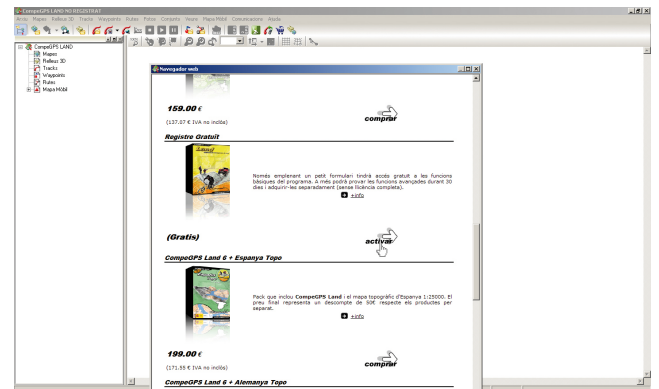
ACTIVATION AND REGISTRATION:

When the program is running for first time, it will open the welcome window and activation of the software license (Figure 10). If you have not acquired any, choose the option 'Activate'. If your willing is to work with the free version of the program and activate the basic functions, you must choose the function 'Get the free registration or buy license'. An Internet connection is always required to activate the program. In doing so, we will get the list of licenses (Figure 11), where we can look for the free registration. Click 'Activate' to do so.



Picture 10

We will have to fill out a short form where you can choose whether or not to receive newsletters and announcements by email. Accept the terms of use to activate the license. After filling out the form and re-activate the license, a window of the program will confirm that the program has been properly registered (Figure 12). From now and forever we can use all the basic functions of the program, and during a month of testing, the other advanced functions.



Picture 11

Basic functions:

- Visualization of digital maps in many formats.
- Download free maps from the Internet.
- Calibrating maps in order to digitize the paper maps you have.
- 3D landscapes from around the world that can be downloaded free.
- 3D last generation viewer, to work in the most spectacular and realistic way.
- Creating, editing and animating of waypoints, routes and tracks.
- Direct navigation with moving map mode (laptop).
- Compatible with most GPS to send and receive tracks, routes and waypoints.

Advanced functions:

- Viewing and editing maps compatible with several vectorial formats (including DXF and DWG through AutoCAD plug-in).
- Evolved graphical system.
- Roadbooks where you can arrange all your tracks, know your statistics and monitor their progress.
- Track Server to share trips with others.
- Scan Maps Function to display the location of the margins of all the maps available and open the most interesting.
- Dynamic system of windows and data trees.
- Multitude of coordinates, datums and formats.
- Advanced transparency system to combine the information from several maps.
- Import of TXT files (waypoints, tracks ...)