

TwoNav Sportiva+

Barcelona, November, 3th, 2010. CompeGPS Team SL just officially announced that its TwoNav GPS range will welcome a new model called "TwoNav Sportiva+".

Ideal for competitive cycling and mountain biking, it combines all the attractive features of TwoNav Sportiva adding ANT+ technology to track wireless sensor statistics.



All your data reachable from a single button

As everything is customizable, with TwoNav software, "You rule!".

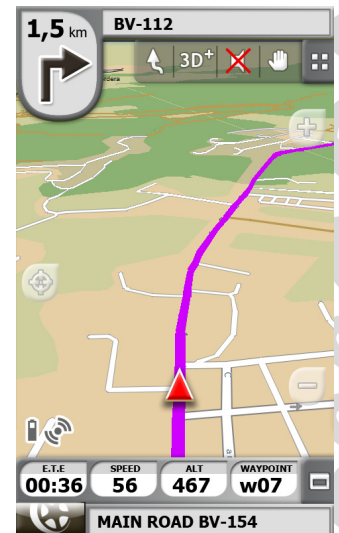
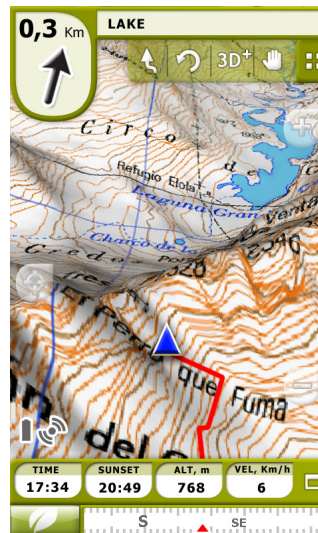
Choose between more than 60 data (speed, distance, altitude, chronometer, etc.) the ones that really matter and display them on its intuitive touchscreen. Just press on the left button to switch between 3 data pages and map page.

Its barometer and 3D compass will do the rest by showing accumulated climb, ascent/descent data and bearing.

City, mountain, or both

As everyone has his own manners and preferences, TwoNav gives you the opportunity to load all type/format of maps.

From Tele Atlas vector maps for Roadbike to topographic maps or satellite pictures, just pick the one you are most familiar with, ride it and record your track!



freedom to discover

Alarm & Virtual partner

Take the chance to program a minimum and maximum value for each data field like the altitude, heart rate, deviation from route or distance for example. That's the best way to optimize your trainings and better adjust your efforts.

To go even further, choose to challenge yourself by competing with your shadow. Simulate your last performance and get motivation by comparing it with your actual position.

Will you do better this time?

All the comfort of digital Roadbooks

If performance is the key word for some, others like to combine effort with beauty of the landscape. It's not always easy to look the multiple on-screen map and at the same time appreciate the view. That's why CompeGPS is always looking for some new way to improve user experiences.

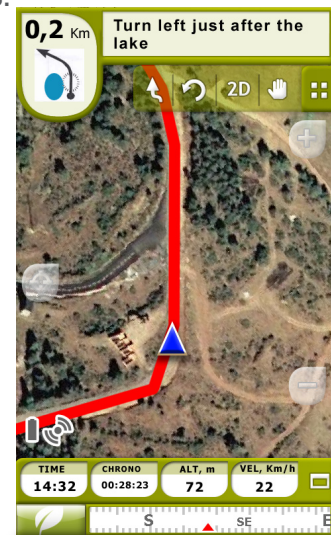
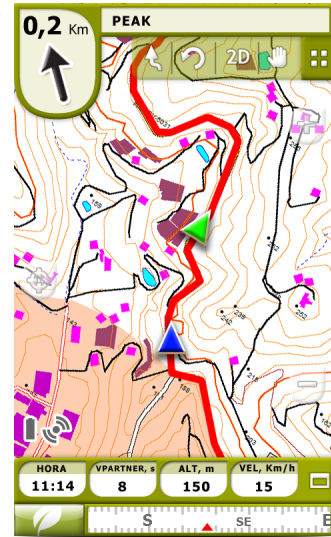
From this aspiration came the digital roadbooks. Draw your track, add pictures and comments of tricky crossroads and send it to your GPS. When you get close to a crossroad, you will hear a bip and the screen will automatically get illuminated.

Start to fully enjoy your trips!

ANT+ technology

Sportiva+ allows to display in real time additional data thanks to ANT+ technology.

This allows wireless accessories such as heart rate monitors, speed/cadence sensors. Note that speed sensor is not included.



Freedom to discover

Track, report and analyse on your PC

Through the powerful CompeGPS Land PC software, get all the tools you need:

- Store your tracks into a logbook to keep them organized in the best way:
 - Sort by calendar
 - Comparison of the most representative data (duration, distance, average speed, etc.).
 - Easy access to the track on the map
 - A temporary grouping of statistics to monitor data according to different periods (days, weeks, months or years)



- Properties of energy (energy and power, taking into account the weight of the user)
- A bunch of properties (distances, times, heights ...) & 'sensors' properties (average and maximum).
- Gradient Color of the track according to different values (Heart rate, speed, slope ...) to analyse quickly.
- Print a full report of your track (New CompeGPS Land 7.1)

An exclusive feature will also allow you to relive your trip in 3D video with live data.

Sportiva+ will be available on december 3rd of 2010

www.sportiva.twonav.com

freedom to discover

