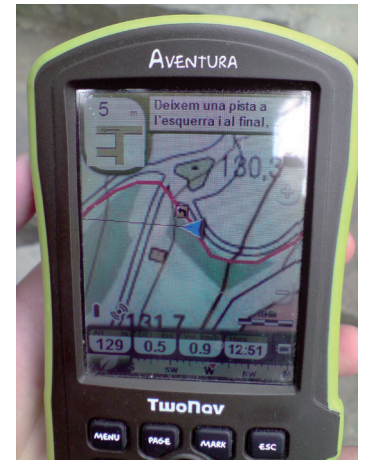


Chapter 4: Roadbooks

Among the new features of CompeGPS Land 7 there's something special aimed to mountain bike lovers: create your own roadbooks. Roadbooks give information about key points of the route you are taking. Roadbooks are presented as short explanations with some additional data such as height, total distance travelled or partial distance. CompeGPS Land 7 allows you to watch all this directly from your GPS device. Roadbooks are a useful tool when the map is not very detailed, but also to add fluidity to our route navigation. In order to create your own roadbooks you will need the track of your trip and a software to draw your own schemes (signals which can also be downloaded from the Web).



Images editing:

The first thing you have to do is create the schematic pictures for the key points that you want for your roadbook (image editing software will help you). Image measurements must be 128x128 pixels. Pictures must be .bmp format. Tip: number each image using the same order in which they will be applied. When pictures are ready, you will have to proceed to the next step: roadbook's creation (Figure 1).

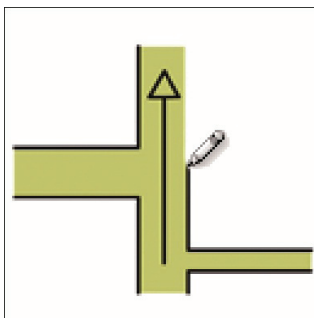


Figure 1

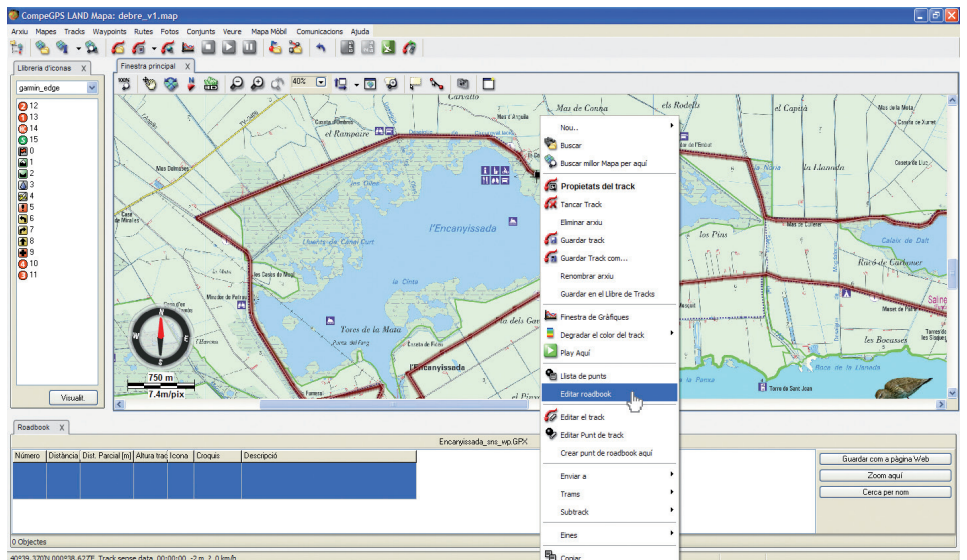


Figure 2

select the track you want to use. When track is opened, you will have to right-click on the track and choose the option 'Edit Roadbook'. You will find two windows: the library of icons at the left, and the roadbook library at the bottom (Figure 2). The next step will be fixing the points which will appear at the roadbook.

Creation of a roadbook:

Start CompeGPS Land and click 'Tracks' on the menu, choose 'Open Track' (Ctrl+T) and

If you don't know where the exact point to create a roadbook is, you can always click the right mouse button to create the roadbook point with specific coordinates. You just

have to create the roadbook point near to the track. After that, displayed data will appear at the bottom bar, with right-click on any field you only need to select 'Properties'. A bar with detailed information of the point (including the coordinates) will appear on the right. In order to modify any information of the point, you will have to use the pencil icon to manually enter the values of the exact coordinates. Then click 'OK' button and close the properties bar.

For example, if you want

to mark a location: right-click on the exact point and select 'Create roadbook point here' (for more precision you can use the mouse's wheel). Point will be automatically placed at the bottom toolbar (containing the exact data of the point). The remaining blank fields (Icon, Croquis and Description) have to be filled by the user.

'Icon' function allows you to choose the graphic icon which will be displayed over the track (usually a simplified croquis). CompeGPS Land offers a specific number of icon galleries depending on the utility that we want to give them (Figure 3). The simplest and the default one is the 'Garmin Edge' gallery. 'Navigation' gallery has been specially designed for navigation. To insert the icon you will have to first choose the gallery you want to work with. After selecting the gallery, you will have to double-click the 'icon' box of the bottom bar. There you will see a drop-down arrow menu from which you will have to select the desired icon. From this moment, the point on the track will be displayed with the selected icon.

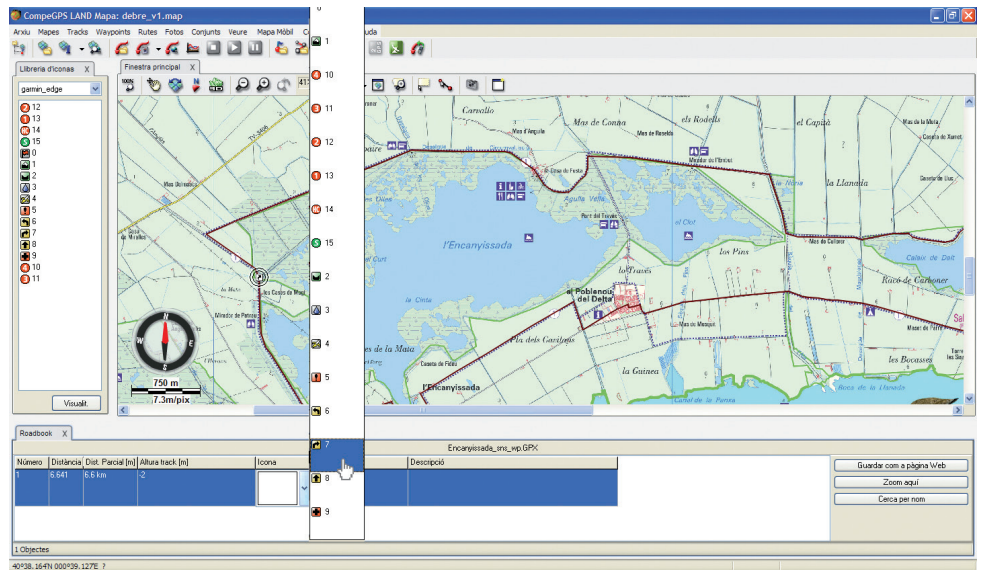


Figure 3

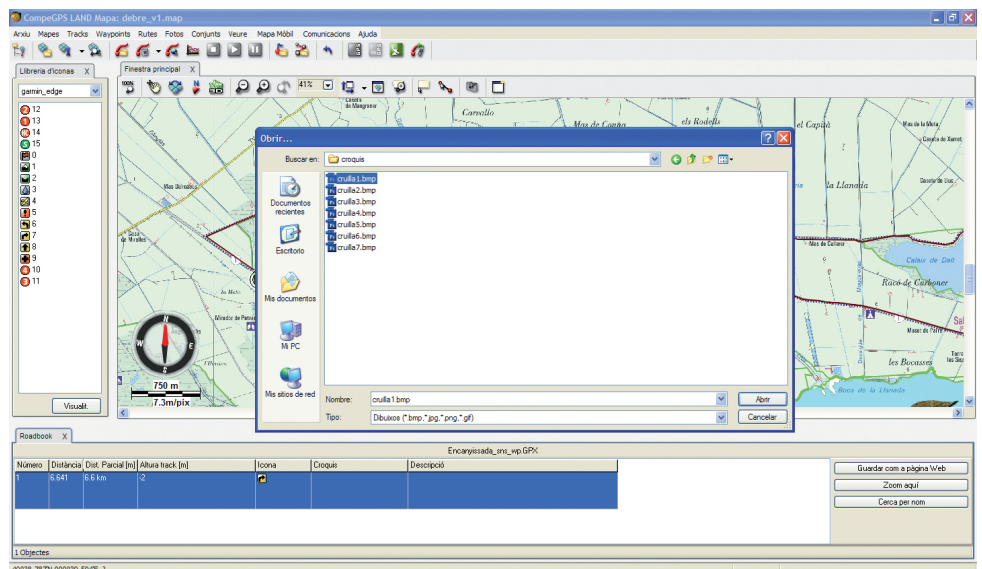


Figure 4

Now it's time to define the 'Croquis'. In this field, an accurate picture simulation of the intersection will be placed. Double-click at 'croquis' field and you will have to select the right image which you previously edited (Figure 4). For the first intersection you will have to select and open the image which we previously called 'intersection1.bmp' (an example). Now the croquis is a little thumbnail of your image.

Last field, 'Description', is being used to write a brief explanation of the point.

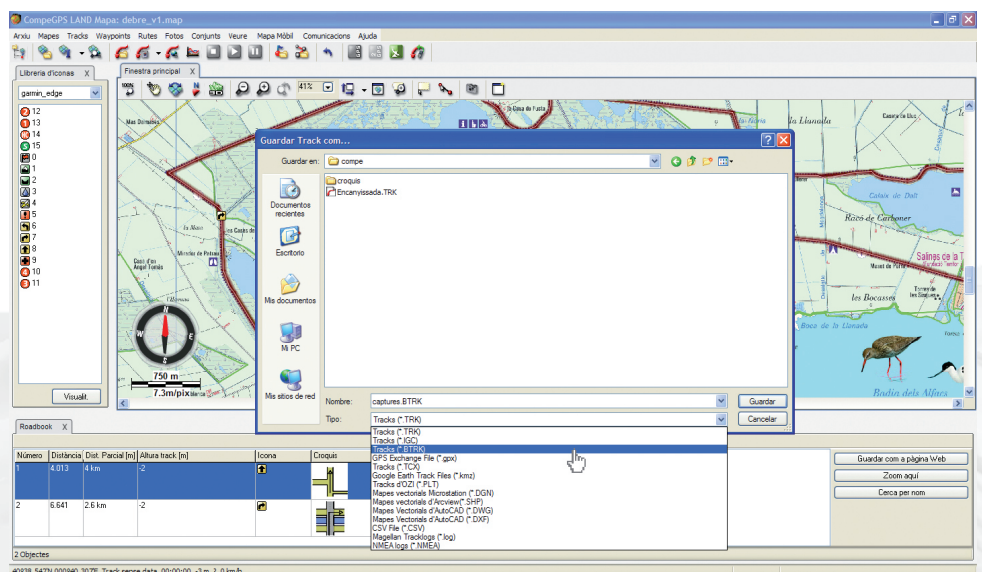


Figure 5

In our case, we will copy the one we have in the roadbook. Follow these steps: double click on the field and type the description text. Short texts are much better for this application, but in case there is a larger text there will be no problem because during the navigation the GPS will show it all. When texts are finished, just click anywhere at the bottom bar and they will be automatically registered.

Now that you know how to enter data for each point, we will have to iterate all points of roadbook by reproducing always the same steps: Icon, Croquis and Description.

Save and use the roadbook:

Once you have finished entering

in order to do this, you must first save the track in .trk format: click right mouse's button on the track and select 'Save as...'

Now you will have to repeat the same operation but this time changing the file extension from .trk to .btrk (Figure 5). This is done because .btrk format is not editable and if the user applies any change, .btrk file must be redone again from the original .trk file (.trk is the source of .btrk).

In order to use the edited roadbooks with CompeGPS Land, the user will have to use any device which can work with TwoNav navigation system (Aventura, Sportiva, Evadeo, etc).

All that remains now is to send tracks to the device. That's exactly what we learned it in the previous chapter (Figure 6).

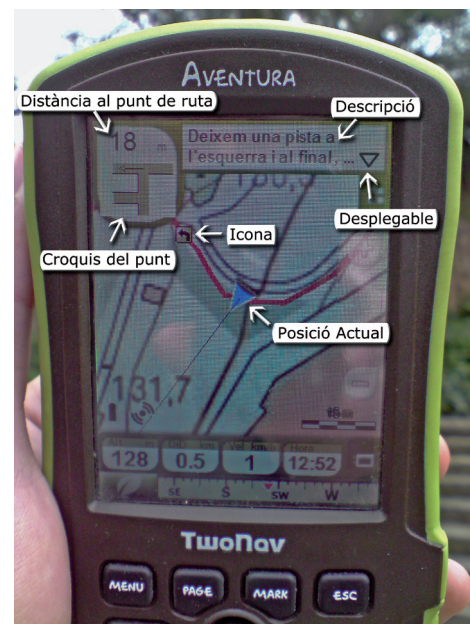


Figure 6

