

Chapter 8: CompeGPS Land + TwoNav Aventura GPS

Thanks to the serial port of TwoNav Aventura this one can be connected to other devices.

In this tutorial, we will see how to connect it to our PC software, CompeGPS Land 7.

By doing this you will be able to surf with your laptop using the GPS signal of your TwoNav Aventura.



Requirements

- CompeGPS Land 7
- GPS with a serial port
- GPS serial cable (TwoNav Aventura cable can be found on our website)
- USB converter to serial port
- USB to serial driver

Find a USB to serial driver

Won't be very difficult to find this issue on our website: just type "driver USB serial", and you might see several results. Once you have found the one you prefer, download and install it

Connect your TwoNav Aventura to your laptop

First of all you must connect the serial cable to your TwoNav Aventura (The correct hole is the one at the right side of the SD, "I/O" symbol).

After that, the user will have to put together the serial port with the converter. At this point you only have to connect the USB port to your laptop.

It's ready!

CompeGPS Land 7

Start CompeGPS Land 7 from "Communications > Communications' configuration". After that, select the communications port by selecting "USB to serial", "NMEA" protocol and "4800" speed (Figure 1).

Now, at the menu, select "> Moving map > Activate GPS", and finally, end the connection.

Congratulations, your device is now set!

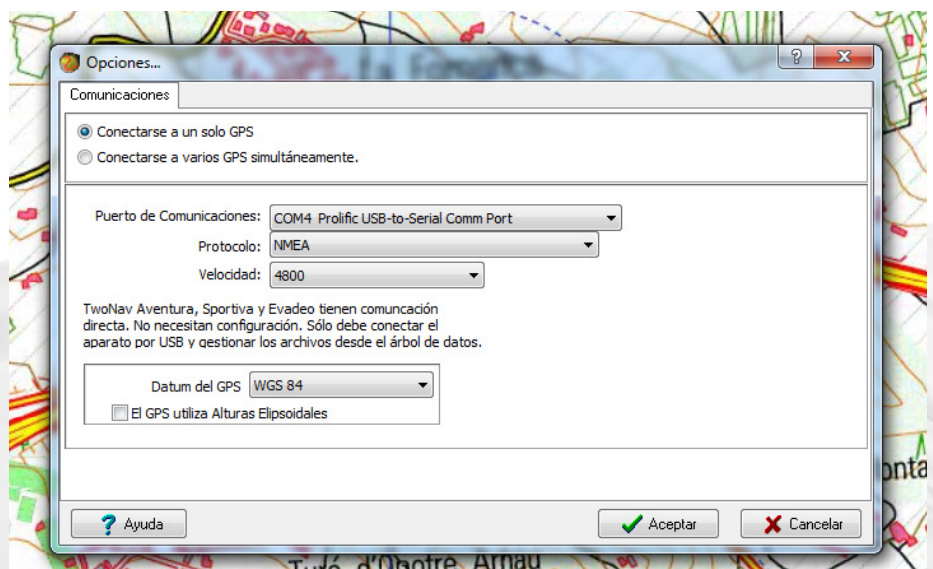


Figure 1

Data configuration

Once the connection process is finished, your position will appear at the right side of the screen, and at the same time some configurable data will be set at the left side (Figure 2). All these fields can be modified in order to show the most interesting ones. Right-click on the field you want to change and choose 'Select field'.

You only need to transfer the fields from left to right using the arrows between the two columns. These fields can also be ordered with up and down arrows (Figure 3).

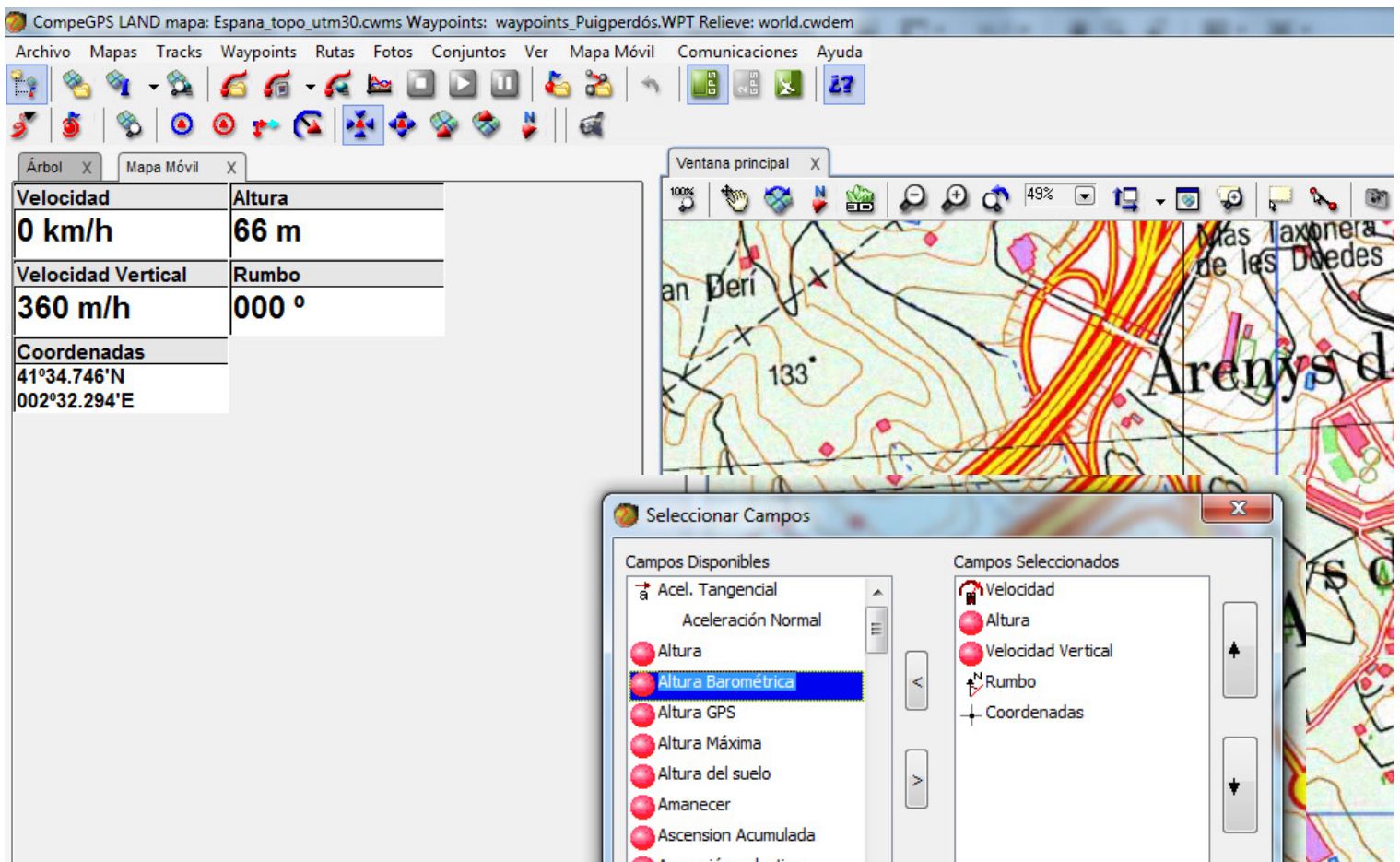


Figure 2

Figure 3