

## Geocaching

'Geocaching' is an adventure game based on the search for "hidden treasures" in a specific geographical point. This point should be localized with a GPS device. Treasures are hidden inside 'tupperware' containers with a guestbook and some gifts for the hunter. The guestbook is used to write our presence in that point, while the gift is the incentive to invite people to take part in this game. CompeGPS Land is the ideal software to work with the coordinates where the treasures are hidden and prepare the path to find them. In addition, the latest version for TwoNav GPS (Aventura, Sportiva, iPhone, iPad), already incorporates a specific section for geocaching.



## GETTING THE COORDINATES:

Geocaching.com is the largest community in which are listed treasures from around the world. Although there are other pages such as Terracaching.es. Once the treasure is hidden, the author will publish the exact coordinates where the treasure is located plus a brief explanation of what you will find. You must be registered on the website in order to see the exact coordinates of the treasures (totally free). In our example we will look for a hidden treasure in a particular area posted at geocaching.com.

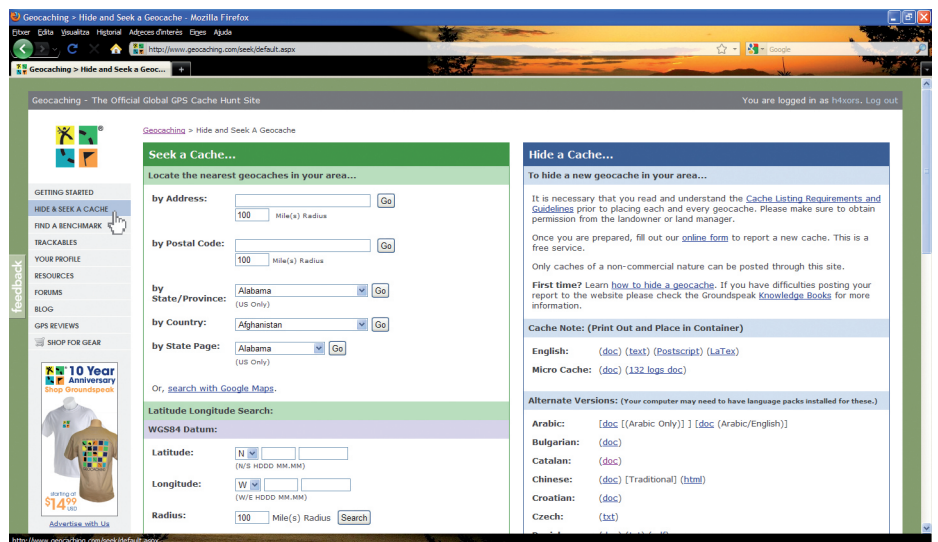


Image 1

Once registered, we get into 'Hide & Seek' section in 'cache'. In our example, we are going to investigate a hidden treasure at Turó de Montcada. It will be necessary to find new information on the road to get access to the final coordinates of the treasure. Thus, at 'by Address' write 'Montcada' and click 'Go'. At the list of hidden treasures that will appear, we have to click at 'Turó de Montcada' (Figure 1).

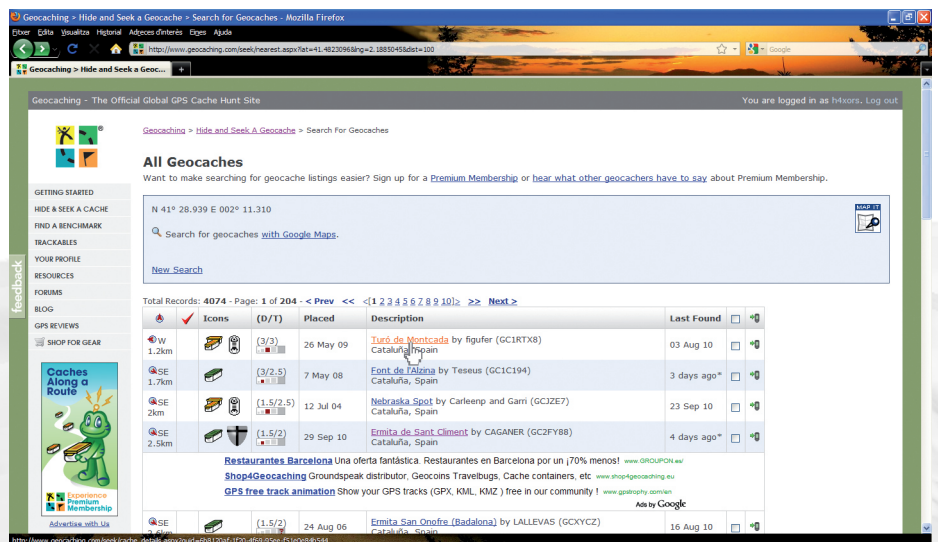


Image 2



At the new window the user will find the coordinates of several points of the selected itinerary, these points are the places where the user will find new details on how to continue the way to the final point. Keep in mind: coordinates are using WGS84 datum (**Figure 2**).

### CROSSING POINTS:

Run CompeGPS Land and open the specific zone map. Once opened, add the several points where the author tells us that there we will find more information on how to continue our itinerary. You just have to add waypoints. Click at **'Waypoints'** menu and select **'New Waypoint'** option. At **'General'** tab change the name, at **'Coordinates'** tab add the new coordinates and change the datum to WGS84 (**Figure 3**).

You will have to repeat the same action within several items until all crossing points will be marked on the map (**Figure 4**). If we click on the map with the right mouse button and select **'transparency'** option, we can change the intensity of the map to distinguish the crossing points that are set, so that might help to prepare the itinerary (**Figure 5**).

### FILE ASSOCIATION:

In order to get the final coordinates of the treasure located at Turó de Montcada the user will have to find some more gaps. Gaps which are very useful to get the final location of the treasure. Series of photographs will show the user what he needs to find in each location.

CompeGPS Land allows the user to associate these pictures to different locations, so if you want to load them to the GPS, it also needs in situ images.



Figura 3

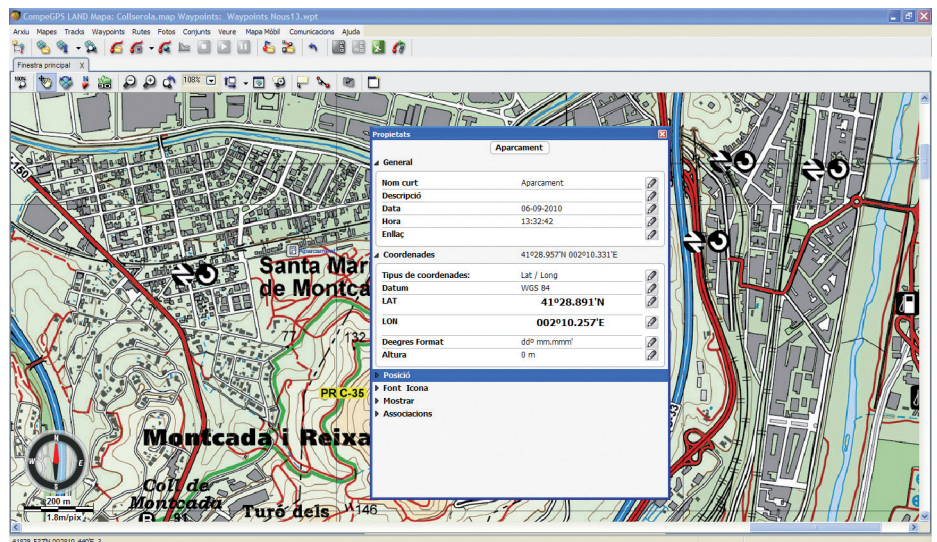


Figura 4

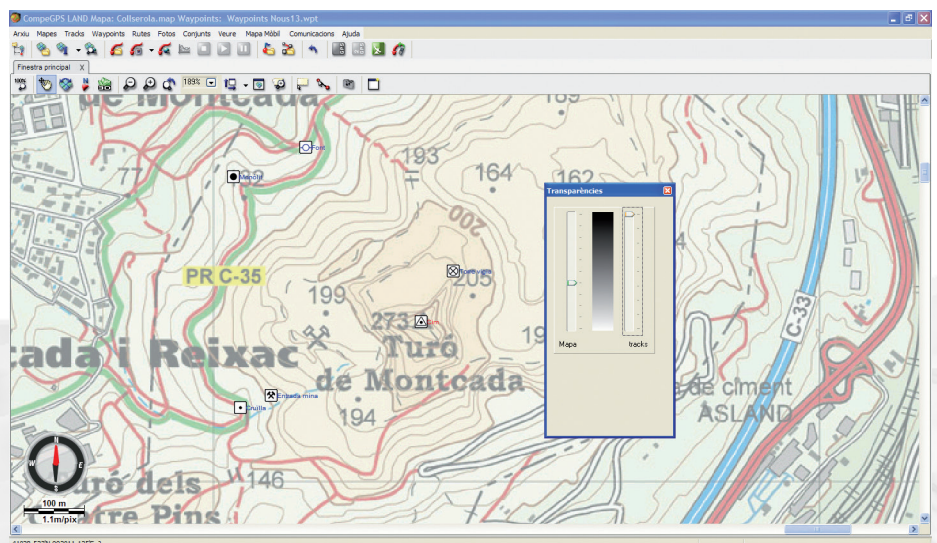


Figura 5



These images can be seen from the GPS manually or automatically (that's when the GPS device is getting closer to a certain radius of the selected waypoint).

The first thing the user will do is download the images to the computer. These images can be downloaded from the website where is possible to obtain the coordinates. Now, click the right mouse button over the different images and select **'Rename and save the image'**. Rename these images and save them inside the folder you want.

From CompeGPS Land, click at the crossing point with the right mouse button and click **'Properties'**. The last tab, **'Associations'**, allows the user to localize the file he previously saved. Click on the pen and choose the file (**Figure 6**). Then the user will see how the linked image of the crossing point appears at the data tree. Apply the same action to the other points.

The new version of CompeGPS Land can also generate field notes to facilitate the editing of comments, annotations, etc... In this case the user can use this function to keep the formula of final point coordinates. To do so, just click at **'properties'** of the crossing point and, on the **'Field notes'** tab in the **'Comment'** option, write the formula.

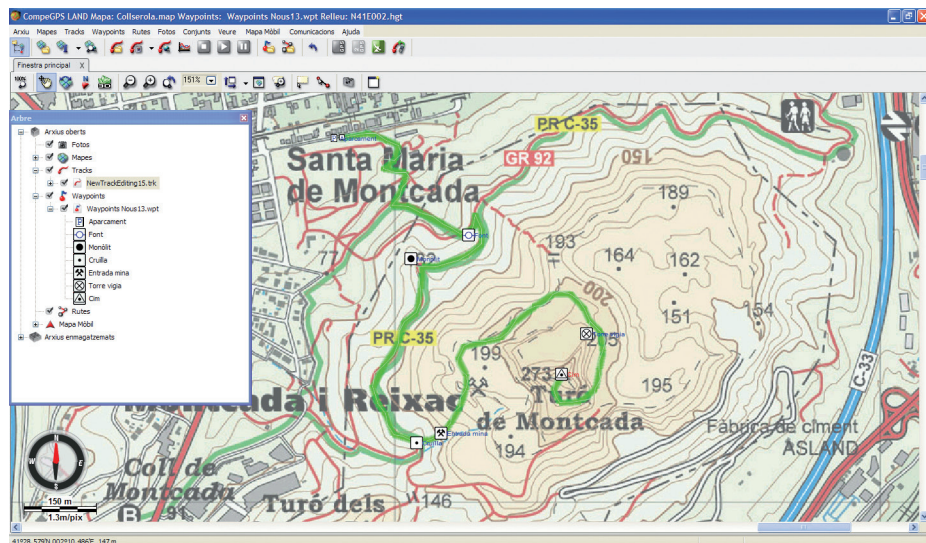


Figura 6

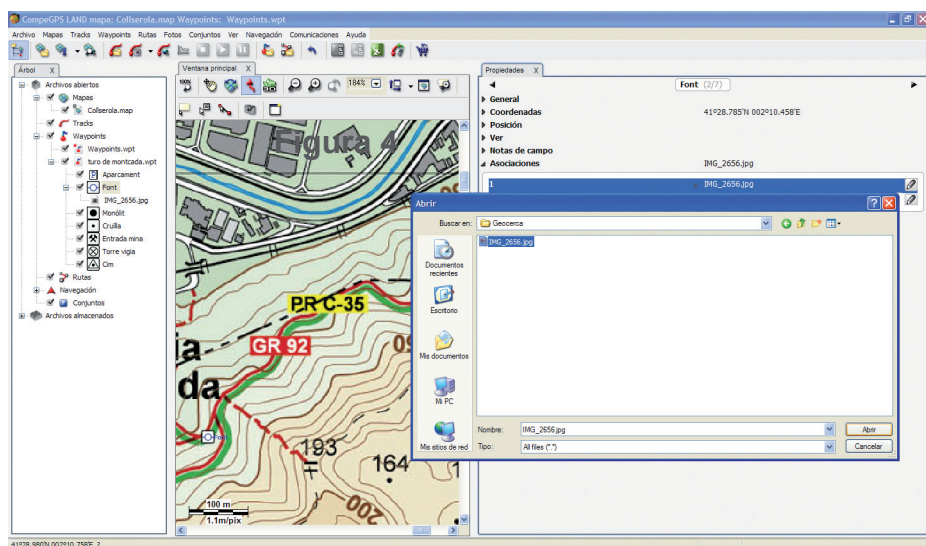


Figura 7

## TRANSFER DATA TO GPS:

First of all, you must save the waypoints file before transferring. Once the GPS device has been plugged in, it will appear at the data tree. Then, drag the waypoints file to the receiver. Due the fact that attached data is included, a warning message will notify this. The user has to press **'Accept'**.