

Summary

First steps

- 1 - Unlock your free tiles page 1
- 2 - Unlock the Track Manager 7 module page 2
- 3 - CompeGPS maps page 3
- 4 - Update your CompeGPS Land page 4

Communication with GPS

- 1- Your TwoNav Aventura/Sportiva GPS page 5
- 2 - Sending/Receiving data from CompeGPS Land/Air
 - A - How it works? page 5
 - B - Send maps to your GPS page 6
 - C - Add a SD card page 6
 - D - OnRoad Mode page 6

More questions?

First step

Your GPS may come with some preloaded and 'plug and play' maps. Others need to be activated first (for example the 5 free tiles to choose). These maps can also be installed on your computer through our software CompeGPS Land (each map comes with at least two licenses).

To activate these maps go on your personal space mycompegps.com.

Then enter the promotional code, which is printed on the green/white card (inside the box), and the confirmation code displayed in red on the web page.

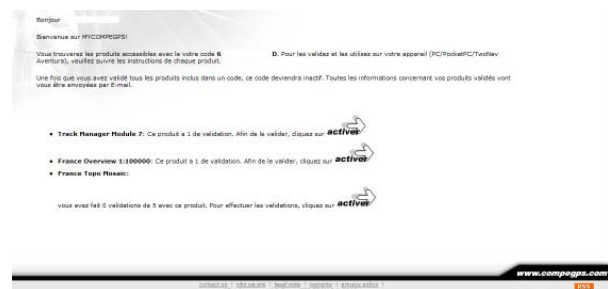
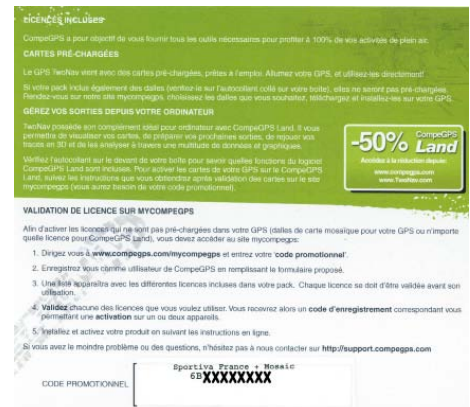
You will enter then inside your CompeGPS' private space.

1 - Unlock your free tiles (from 1 to 5 if available for this country)



A - Complete this quick form. You can change the language from the top right.

Choose the language in which you want to receive our different e-mails with the registration codes for your maps.



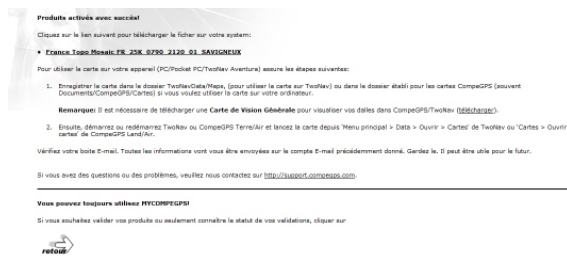
B - The list of products, which you have access to, will appear. The module "Track manager 7" will allow you to create and edit your tracks through CompeGPS Land/Air 7.

In the case you get the 5 free tiles, you will be asked to choose them under the **Maps Viewer**.

For the other products, click 'Activate' to receive the link to download your map and the different activation codes. Our maps can be installed on two devices at minimum, so you can use them on your computer and GPS.

*IGN French Topo maps don't need any activation code to be opened.

freedom to discover



C - When zooming in on the map viewer (with the mouse wheel), you will see the different tiles appearing. Click on “Activate” when you have made your choice. The selected area will appear in blue.

D - The next page will confirm that your choice has been registered. You will then receive a copy by e-mail. Click on “Back” to return home and continue with the remaining maps.

For each product previously enabled, you will receive an e-mail with the download link and/or registration code. Here is the list of maps/products that you can activate with your TwoNav Aventura/Sportiva GPS:

- From 1 to 5 tiles of topographic maps according to the country (except for Italy)
- The urban V-map of the country (only with TwoNav Aventura)
- Track Manager Module

2 - Unlock the module Track Manager 7**:

Prepare and edit tracks and routes for your future trips (unlimited number of points) and then transfer them to the GPS. CompeGPS software included in the box comes in basic mode, which will let you to view all your maps on your computer but also convert all types of formats for using them on your GPS running with TwoNav software.

We offer to all TwoNav Sportiva/Aventura GPS users the free Track Manager module. You therefore benefit from it indefinitely. It must be activated from your private space mycompegps (Track manager 7). You will then be sent a registration code by e-mail. Run the software and introduce this code from Help>Activation Info> Enter code.

Once the code entered, you will have access to the remaining modules: Communication (with all GPS brands), Navigation, Vector Map Edit, Map Tools, 3D, AutoCAD and FotoGPS for 30 days. This will be an opportunity for you to see if you really need these functions or if the basic functions are enough.

We remind you that if you own a TwoNav Aventura or Sportiva GPS, you have the right to a 50% discount on the price of the license (**enjoy the discount**). The full license comes with all modules except AutoCad 7.

Guide GPS et CompeGPS Land/Air 7

3 - CompeGPS maps

A- Use your maps on the PC with CompeGPS Land/Air

Each CompeGPS' license (maps or software) comes with 2 registration attempts, so you can use them on two different devices. You can use your maps with your computer and GPS.

Download your maps from the email we sent you. Save them in the folder of your choice. By default, the folder used by the software is 'MyDocuments/CompeGPS'. If the maps you get are in *.rtmap format, which is the case for tiles maps, departments or zones, , **it is mandatory** to previously install the overview map if available for this country.

To install this overview map, follow these different steps:

- 1- Check you have the last CompeGPS Land/Air version from our www.compegps.com Website.
- 2- Download the pack corresponding to your country (**if available**). Here you will find the whole list of available countries.
- 3- Once downloaded, unzip the content in the folder: My documents/CompeGPS/maps
- 4- It will be created, among others, the folder **COUNTRY_RTMAP** (depending on the country chosen) and **CountryTopo.imp**.
- 5- Now, you just have to copy/paste the tiles you unlocked before (or those you will buy in a future) in the Country_RTMAP folder. If you bought tiles, departments or zones, you always need to unzip the content before to paste it in COUNTRY_RTMAP. The files will be always in *.rtmap format.
- 6- Launch CompeGPS Land/Air software. From 'Maps>Open maps', choose CountryTopo.imp (which is in 'My documents/compegps/maps' folder). You will see, in the data tree window, the map called CountryTopo.imp. Inside, you will see 'list of sections' and all the tiles available in the 'My documents/CompeGPS/maps/Country_RTMAP' folder.
- 7- Congratulations!

Your PC and software are both ready to send maps to your TwoNav GPS.



freedom to discover

B- Maps activation

Once your different maps are downloaded, open them from your software CompeGPS Land/Air: 'Maps> Open map'.

For each, you will be asked for the registration code sent previously by e-mail*.

Each product registration code is different, so be careful entering the right code for the right map you wish to open. If your computer has Internet access, the activation process will be automatic. If you have an older version than 7.0 of CompeGPS Land/Air, you may need a key file (see the explanation to create it with the email sent with maps). This file must be saved in the folder COUNTRY_RTMAP beside the maps.

***Note:** For IGN French maps, the activation is no longer necessary from CompeGPS Land/Air 7 and TwoNav Aventura/Sportiva/iPhone 2.1.6.

The maps can be directly opened without going through the registration process. You won't need any key.

4 - A new version of CompeGPS Land/Air is available. How to update my software?:

All new versions of our software CompeGPS Land/Air are published on our website www.compegps.com, in "Download" section. By subscribing to our Newsletter available in English, you will also receive a notification of these updates by e-mail.

In the "Download" section, look for CompeGPS Land or Air product and click in "Download."

The file will then be downloaded on your computer. Once the download is completed, double click on the *.exe file and the installation will start automatically. Then follow the instructions until the installation is complete. Launch CompeGPS Land/Air. It's done, your software has been updated.

You will notice that the software will inform you, through a small window which appears at each launch, when a new version is available.



freedom to discover

Communication with GPS

We have seen how to send maps from the software CompeGPS Land/Air 7 to your TwoNav Aventura or Sportiva GPS. It is also possible to send other items as waypoints, tracks or routes.

1- Your TwoNav Aventura/Sportiva GPS

To always have the latest version of the TwoNav software on your GPS, please log in regularly on our CompeGPS site, from "Download" section or subscribe to our **Newsletter** in English, which is sent monthly with a summary of updates and improvements for different products. See the installation procedure to **update your software**. You will also find, much more occasional, updates for the operating system. See the procedure for updating the **operating system**.



2- Sending/Receiving data from CompeGPS Land/Air

With the purchase of a TwoNav Aventura or Sportiva GPS, you get the demo version of our PC software with preferential access during 30 days. Indeed, the additional Track Manager module can be used for free indefinitely. You can also communicate with your TwoNav Sportiva/Aventura/Evadeo GPS or iPhone with ease. To obtain these benefits, you must download the 7.0 version of the software and register for free by completing a form.

You will then be able to communicate with your TwoNav Sportiva/Aventura/Evadeo GPS and **iPhone** (Sending tracks, routes, waypoints and maps from your computer).

A- How it works?

Connect your TwoNav Aventura/Sportiva/Evadeo GPS on the USB connector of your computer. Once detected by the latter, then launch your software CompeGPS Land/Air 7. You will see your GPS appearing in the data tree (Fig. 1). By clicking on the "+", then you open the whole tree and can view different folders from your GPS.

To send a file to the GPS (map, track, route or waypoints), do a right click on the file and select:

> Send to Sportiva / Aventura / Evadeo. You can now view it on your GPS.

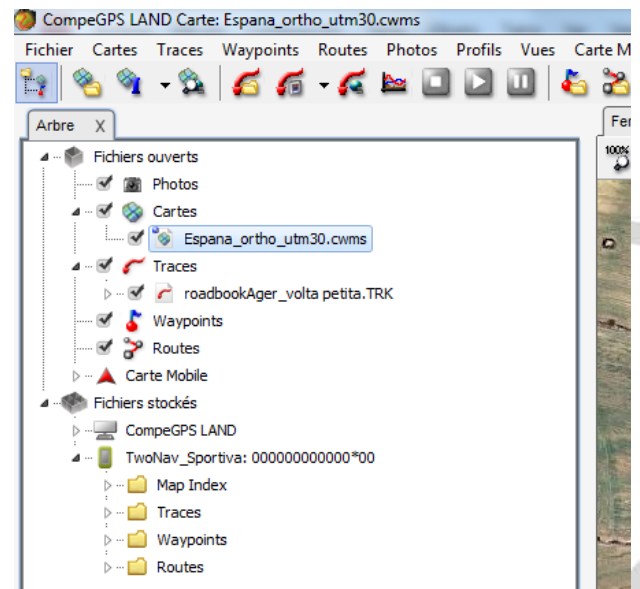


Image 1

B- Send maps to your TwoNav Aventura/ Sportiva GPS

In the same way as for the tracks, waypoints or routes, you can send your maps to your GPS from CompeGPS Land/Air 7* software.

From the data tree (under 'Open Files'), do right click on the map and choose:

> Send Sportiva / Aventura (Fig. 2).

According to the map, you will be asked for the registration code (received by e-mail.) We remind that for the IGN French maps, it is no longer needed an activation code and can therefore be sent directly to your GPS.

Important: For this, you must have the 2.1.6 or higher TwoNav version.
See point 1 - for the installation of the update.

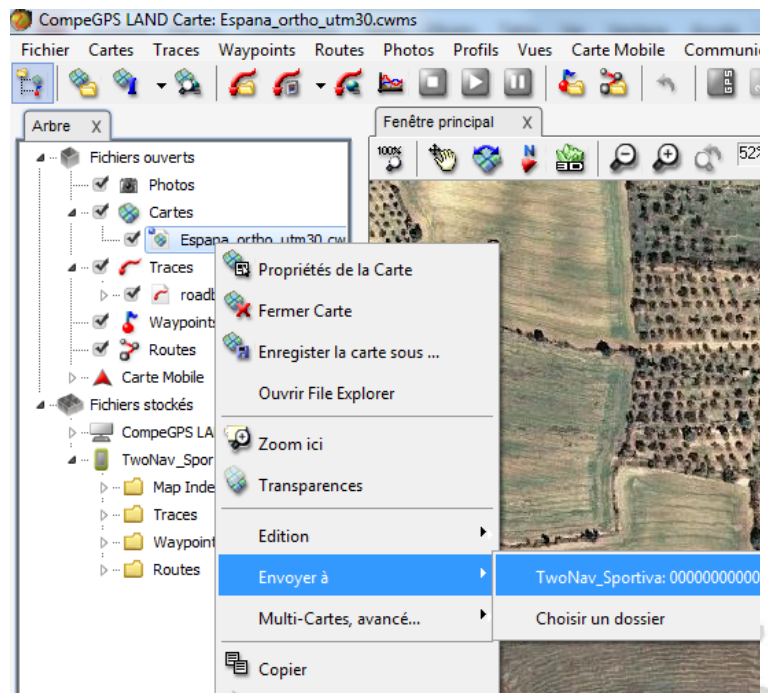


Image 2

To visualize your maps inside your GPS, go to the main menu > Data > Maps.

Check the map you want to use and use the "zoom to" tool. The map appears in the center of the screen.

*Activated by default on CompeGPS Land/Air version 7. Previous versions of the software don't allow direct communication. To transfer a file, you will have to use the GPS as external drive. Then put your maps in the TwoNavData/Maps folder and TwoNavData/Maps/COUNTRY_RTMAP for tiles, departments or zones of maps. If this is a track, copy the folder in TwoNavData/Tracks.

C- Adding a SD card

Sportiva comes with a 2GB of internal memory; it can be useful to add an SD card (Up to 32 GB). You can also exchange the 4GB memory card of your Aventura for another with higher capacity.

Add an other SD Card

D- On-Road mode

On TwoNav Aventura, the On-road mode is activated by default (with TeleAtlas V-maps) but on TwoNav Sportiva is disabled due to any V-map is preloaded. However, you only need to acquire any TeleAtlas vectorial map (V-map) from our website, send it to the GPS and the On-road mode will be activated automatically. In the main menu, the 'On-road' tab will appear.

Just switch to this mode by clicking on this grey tab from the main menu.

More questions?

You didn't find an answer to your questions?

- Find the full manual for:

[TwoNav Sportiva](#) - [TwoNav Aventura](#) - [iPhone/iPad](#)

- If you have any question about CompeGPS Land PC software, have a look to the [full manual](#).
- All the different tutorials about the software which have been published in the Newsletter are [here](#).

You will find information about the most suitable maps according to your activity, how to digitalize a paper map, to create a Roadbook and more.

- And don't hesitate to visit our [Forum](#) to share experiences with other users and ask questions about our products.

Thank for trusting us.

Have a lot of fun with our products,



freedom to discover