

TwoNav Mobile



TwoNav is for sure the most complete sport navigation software you can find. Get a bunch of real time data (speed, altitude, slope, arrival time ...), program your own alarms and discover some really cool extra functions.

And the best part, is that once recorded, you will be able to play around with your data through the powerful Land PC software (Full or free basic version). Quickly transfer tracks, routes, waypoints and maps from one to another and analyse your performances with full details and graphs.

Available for iPhone/iPad, Android and Windows Mobile

- Track any outdoor sport

A dual navigation system (On-Road/Off-Road) to perform most of your outdoor activities (hiking, running, biking, skiing, geocaching, ...). TwoNav can also guide you when you drive. A single solution for all your orientation needs.

- Customize your data page

Get the possibility to display the information you need. Full customizable pages to get access to plenty of data.

- Program your own alarms

Create your own alerts and associate the sound you want to listen. This is the best way to optimize your trainings and better fit your efforts

- Virtual Coach

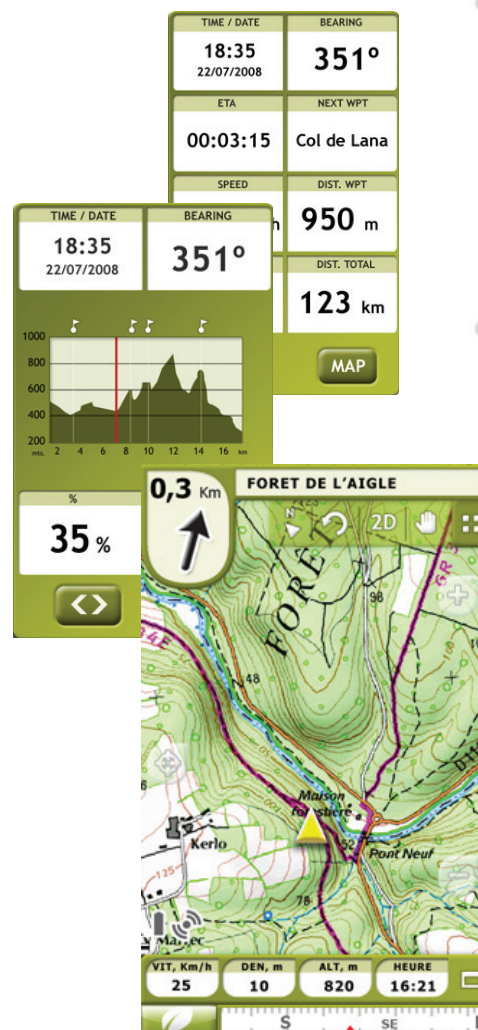
Challenge yourself by competing with your shadow. Simulate your last performance and get motivation by comparing it with your current position.

- Track your heart rate

Compatible with ANT+ heart rate monitors and requires a Fisica Sensor Key.

- Where to find it?

iPhone/iPad and iPod Touch is available directly from the AppStore. **Android** version can be downloaded from our Website or from Android Market. **Windows Mobile** application is only available from our Website.



TwoNav Mobile



LAND PC SOFTWARE, AVAILABLE FOR WINDOWS XP, VISTA, 7

First, install Land on your PC. You can freely download it from our Website and try the full version for 30 days.

Step 1- Connect my device to the PC

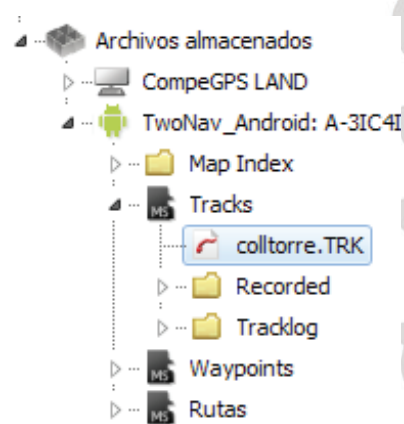
- Windows Mobile and Android

Your device will automatically shows in the data tree once connected to you PC (as USB disk).



If the data tree isn't already showed, just click on the following icon from the toolbar. You should see your device in the data tree (picture 1).

Your device is now connected to Land software. You can see all content in th data tree: Maps, routes, tracks and waypoints folders.



Picture 1

It's Plug&Play! Go now to Step 2.

- iPhone/iPad/iPod Touch

Land software can also communicate with your iPhone. Follow next steps to do it:

- Launch TwoNav App from your device.

Important: Be sure that your smartphone is connected to the same Wifi used by your computer.

- Activate FTP in TwoNav application from: "Menu >Settings >FTP" (Picture 2). You will see the properties of your iPhone as FTP server.



Picture 2

Launch PC Land software and then go to: 'Communications > Connect to iPhone/iPad' and select one of these options:

1- Let CompeGPS use 'Bonjour' to detect iPhone/iPad: Program will try to find the iPhone. (recommended)

You will only need to enter the password displayed on your iPhone with uppercase (picture 3).



Picture 3

TwoNav Mobile

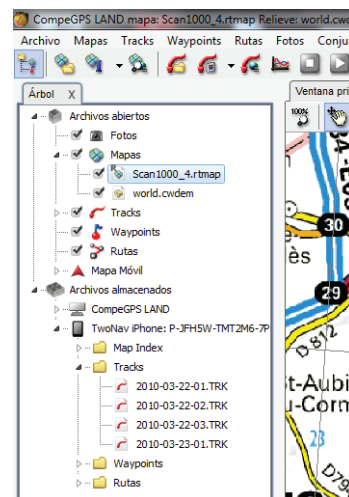


2- I will enter the IP of my iPhone: Search iPhone manually.

Enter the requested fields with the properties shown in your iPhone.

- Host (specific to each connection)
- Port
- User
- Password.

Your device is now connected to Land software. You can see all content from the data tree: Maps, routes, tracks and waypoints (Picture 4).

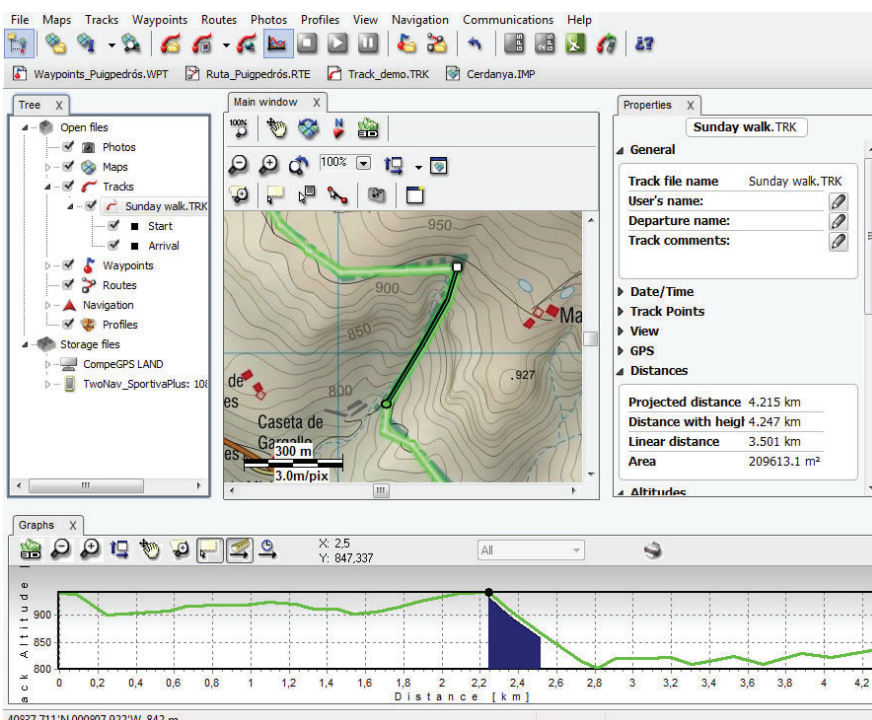


Picture 4

Step 2- Open/Send data in Land

- Visualize your recorded data with the most powerful PC software (Picture 5)

From the data tree, open the corresponding folder (map, tracks, waypoints or routes) and double click on the file you want to open. For exemple the last recorded track from your mobile. It will be automatically displayed on Land. To save it in your PC, right clic on it >Save as.



Picture 5 - PC Land software (free version).

- A **perfect track** displayed on the map of you choice (free online Google maps, topographic maps, scanned maps, satellite pictures...)

- Get a **full report** of your last performance (total duration, accumulated climb, mean speed, distance, calories, ...)

- Display all these data on **graphs** for a quick analyse

- Perform **subtrack analysis** to get even more details

- Store your tracks into a **logbook** to keep them organized in the best way (Sort by calendar, comparison of data like duration, distance, average speed and easy access to the track on the map).

Get the most of TwoNav Mobile with PC Land software

3- Send data to your mobile

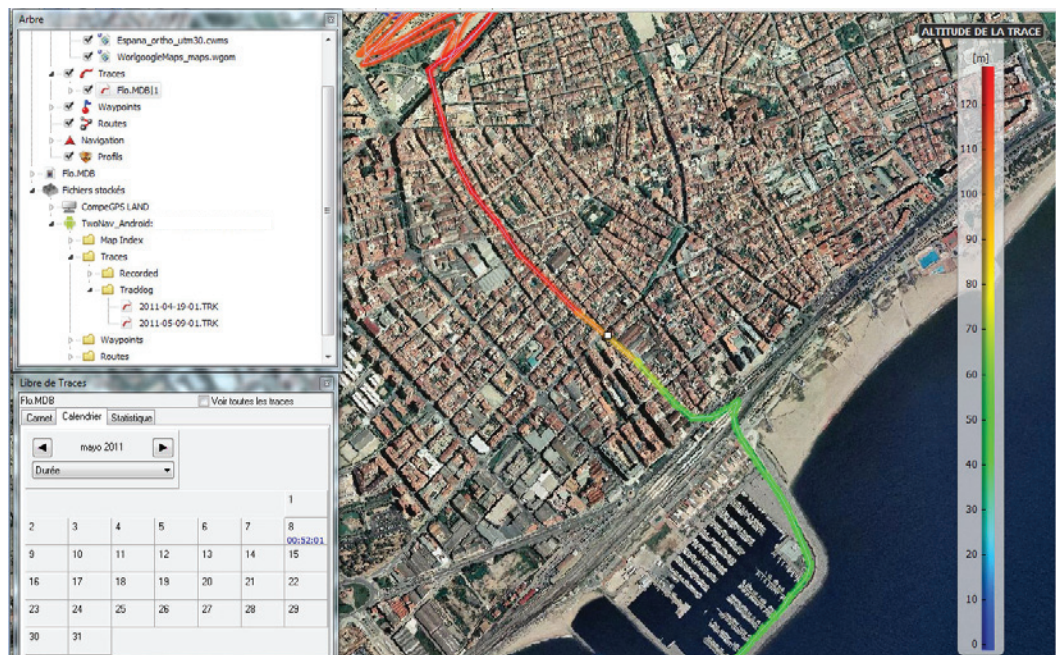
Prepare your track calmly at home to send it to your device. For that, you can use 2 different tools:

- Command "Send to"

Create or open a track, a route or a waypoint from Land. It will appear in data tree>"Open files". Right click on it and select Send to> Your device (Android/iPhone...). You also can send a section of map.

- By drag and drop

You can drop it directly from the data tree, right to "Your device". The file will be automatically placed in the right folder (maps, track...).



Picture 6 - Calendar, data tree, gradient color of the track according to the altitude.

4- Update your version

You also can update your TwoNav version directly from the data tree. Just right clic on your mobile and choose "Update version". Land will connect to Internet and update the application.

Note: For iPhone/iPad version, you need to update from AppStore.

FTP server fo Mac users

As Land software is only available for Windows right now, please use a FTP server to connect to TwoNav application. And be patient, Land Mac is coming really soon!

Here is a complete tutorial.